



## TECHNICAL ROLLERS

# THE PLACE FOR PERFECTLY ORGANISED PROCUREMENT.

*Since 1924, our family business* has always had the wishes of our customers at heart. As the visionary commercial and manufacturing enterprise we are today, we offer much more than materials and components. We inspire our customers with customised service and a broad product range, from standard products to custom-made solutions.

*4 product divisions, 2 locations* right at the heart of the mechanical engineering region of Ostwestfalen-Lippe are our basis for a variety and a depth of cooperation unique in this form.



Manufacturing centre in Leopoldshöhe



Headquarters in Bielefeld

# TECHNICAL ROLLERS

<b>Contents</b>	Page
Inside views .....	4-7
<b>EconomicRoll®</b> .....	8-15
Technical data - EconomicRoll® .....	12
Technical data - general .....	13
Bearing designs - EconomicRoll® .....	14-15
<b>Aluminium rollers</b> .....	16-19
Bearing designs - aluminium rollers .....	18
Technical data - aluminium roll tubes .....	19
<b>Defined low friction rollers</b> .....	20-21
<b>EcoStretchRoll</b> .....	22-27
Advantages EcoStretchRoll .....	26
Bearing designs EcoStretchRoll .....	27
<b>Coatings Technical Rollers</b> .....	28-30
Contact .....	31

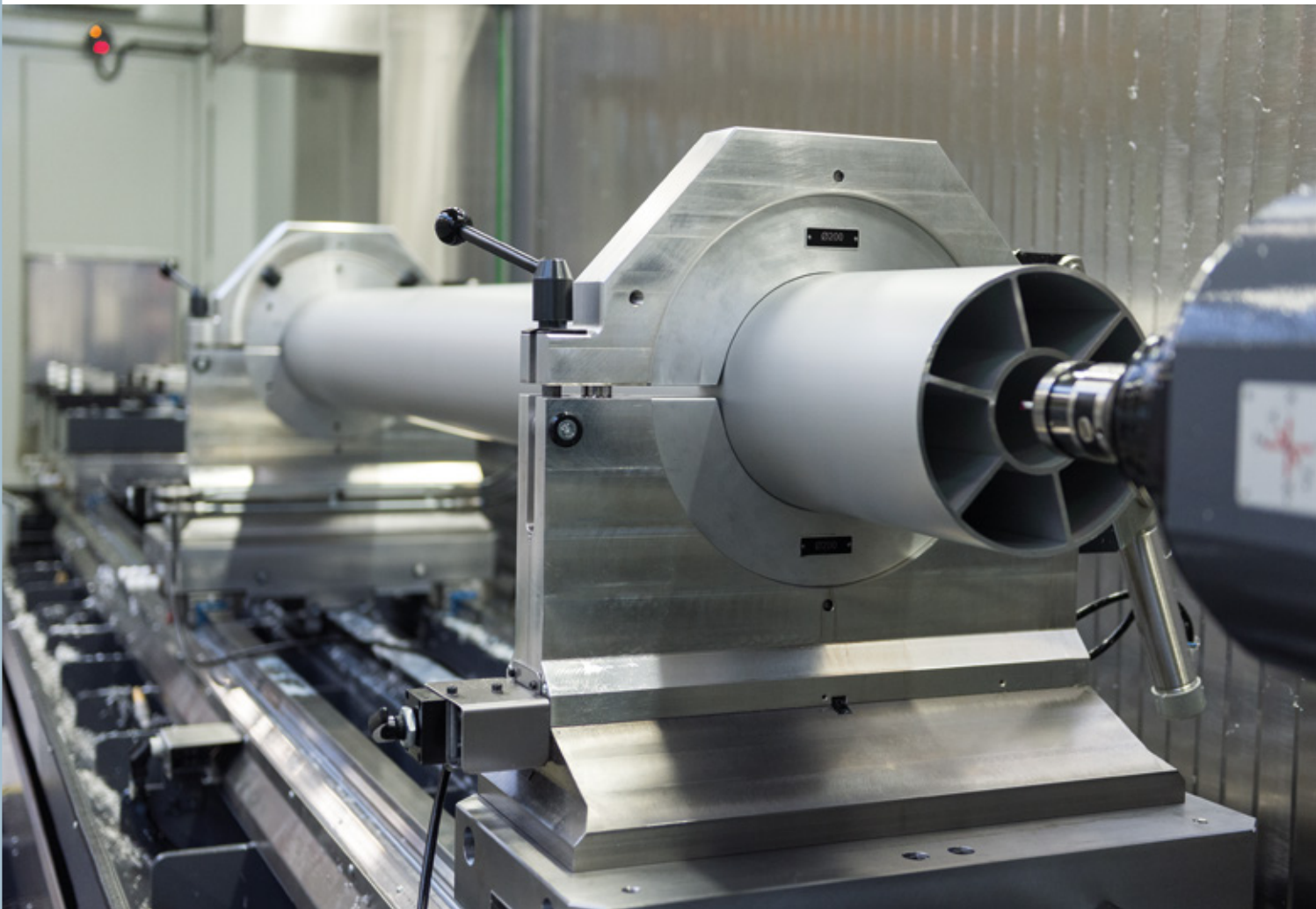
# WE GET THINGS ROLLING: TECHNICAL ROLLERS BY DRECKSHAGE.

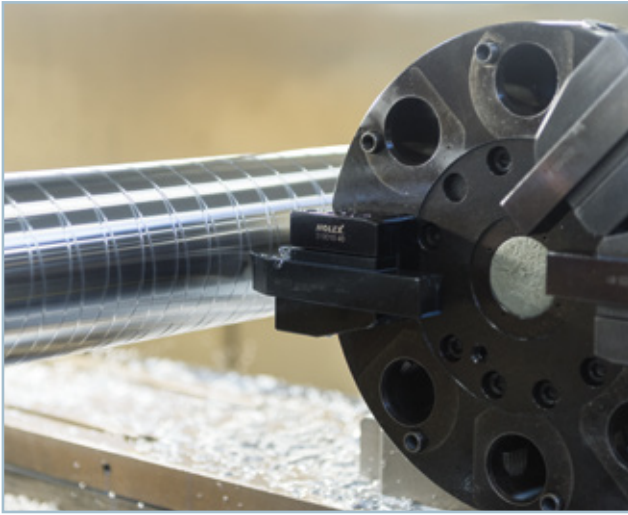




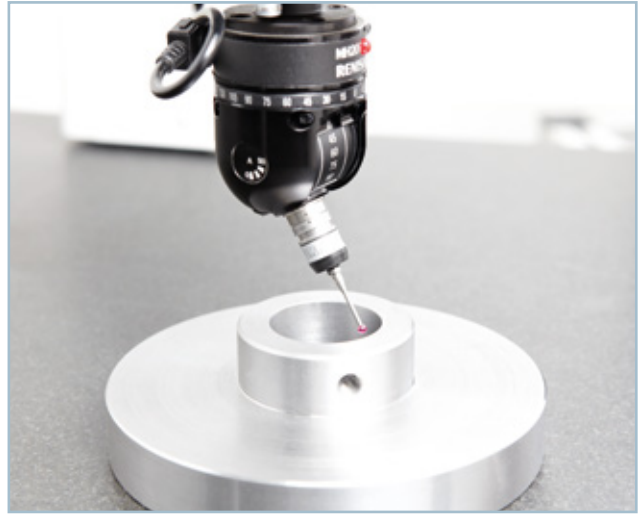
FROM OUR PRODUCTION:  
EACH ROLL ACCORDING TO  
CUSTOMER SPECIFICATIONS.

EVERYTHING FROM ONE SOURCE:  
FROM THE SEMI-FINISHED  
TO THE FINISHED ROLL!





Customer-specific surfaces.



Verified dimensionally accurate parts.



Precise turned and milled parts manufactured in one setting with seven axes.



Precision straightening of technical rollers.



Concentricity tested with an accuracy to a hundredth.



High-quality rolls with optimal protection.

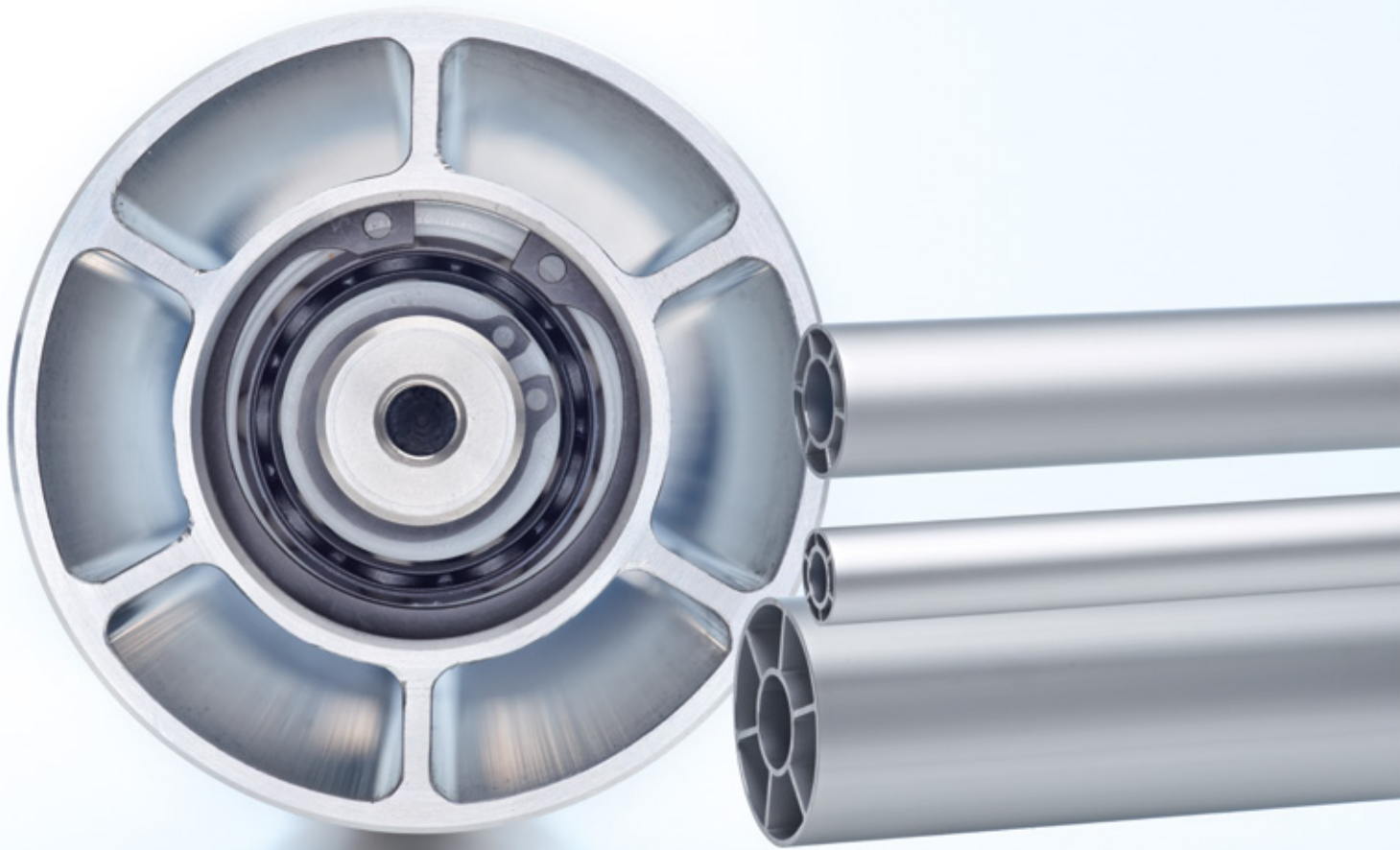
# ALLROUNDTALENT: THE ECONOMICROLL® BY DRECKSHAGE.

<b>Versatile:</b>	Can be used as an idler roller, deflection, guiding, spreader roller ...
<b>Light:</b>	Roll bodies made from aluminium section tube
<b>Resilient:</b>	Special geometry for high bending stiffness
<b>Precise:</b>	Optimal straightness and roundness
<b>Elegant:</b>	Excellent look thanks to anodised surface
<b>Economical:</b>	Delivered from stock – completely anodised roll bodies with standardised bearing



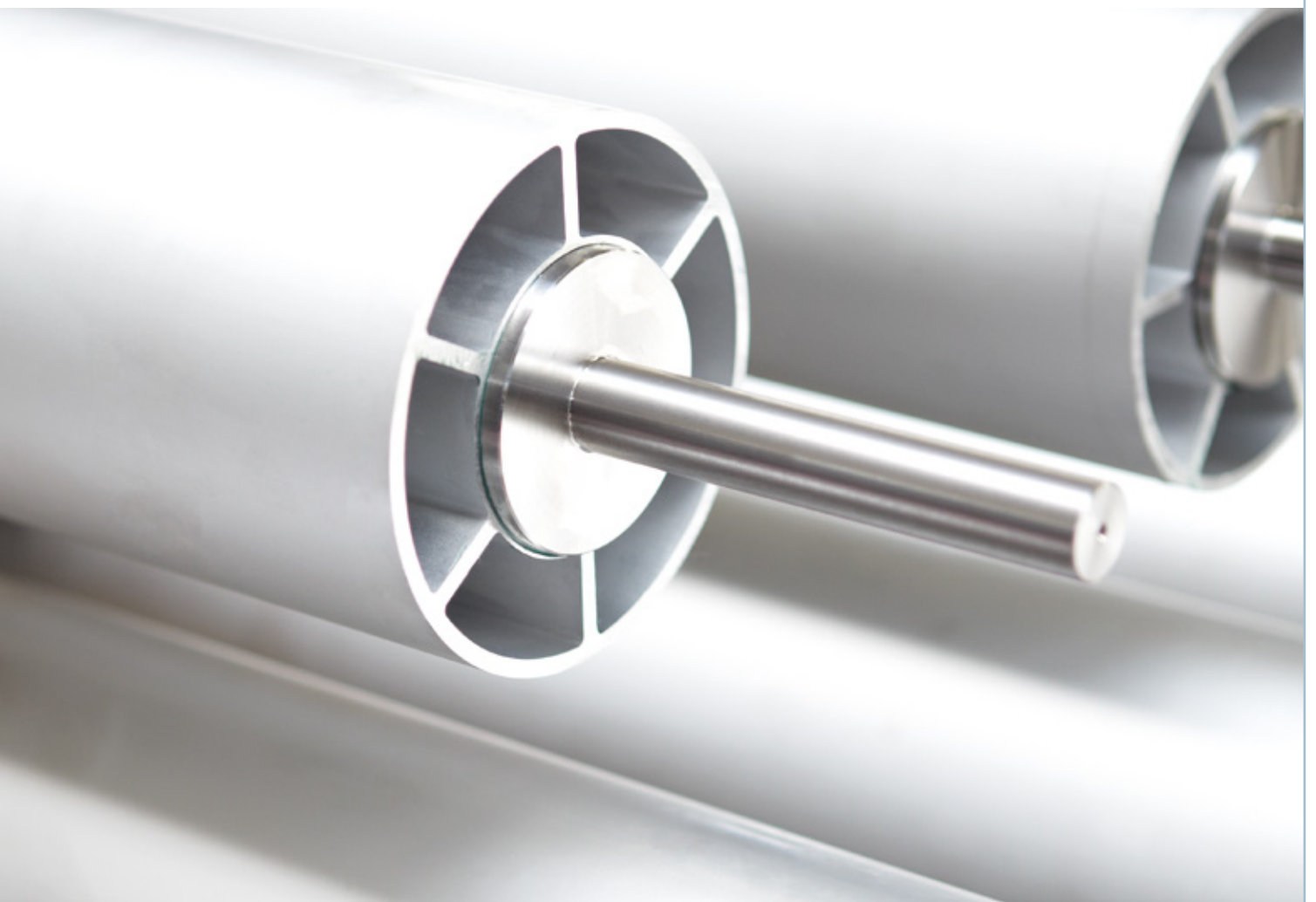


*Developed and manufactured by DRECKSHAGE,*  
the EconomicRoll® features unusual stiffness and roundness thanks to its  
design and geometry at an attractive cost/performance ratio.

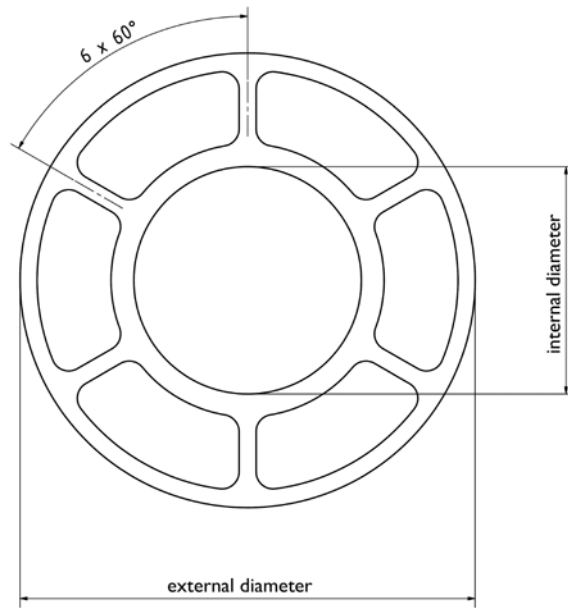


***The geometry with reinforced inner ring allows the direct installation of the bearing.*** Thanks to this design advantage, the EconomicRoll® can be manufactured quickly and cost-effectively. Moreover, it impresses with its outstanding surface and low weight.

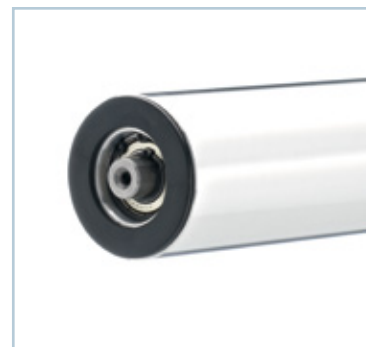
ALWAYS IN DEMAND WHEN  
LIGHTNESS PLAYS A ROLE.



# Technical data – EconomicRoll®



	<b>ER 60</b>	<b>ER 80</b>	<b>ER 100</b>	<b>ER 120</b>	<b>ER 140</b>	<b>ER 160</b>	<b>ER 200</b>
External diameter (mm)	60	80	100	120	140	160	200
Tolerance (external diameter (mm))	+0.46	+0.46	+0.54	+0.54	+0.63	+0.63	+0.72
Internal diameter (mm)	31	40	53	60	60	60	77
Wall thickness, external (mm)	3.0	3.0	4.0	4.0	4,5	5.0	4.5
Wall thickness, internal (mm)	4.0	4.0	4.0	4.0	4,5	5.0	5.0
Weight (kg/m)	3.0	4.2	6.2	7.6	10.0	12.7	14.8
Trading length (mm)	7,000	7,000	7,000	7,000	7,000	6,500	5,500
Concentricity (mm/m)	0.2	0.2	0.3	0.3	0.4	0.4	0.4
Material	EN AW 6063 T66 / AlMgSi0.5						
Surface (Rz 4-6 µm)	anodised	anodised	anodised	anodised	anodised	anodised	anodised
Second moment of area Ix (mm <sup>4</sup> )	325,300	808,400	1,969,700	3,436,700	5,995,530	9,816,000	17,981,300
Section modulus Wx (mm <sup>3</sup> )	10,850	20,210	39,394	57,278	85,650	122,700	179,810
Modulus of elasticity E (kN/mm <sup>2</sup> )	69	69	69	69	69	69	69



# Technical data general

## Standard Ballbearing EconomicRoll®

### Deep groove ball bearing

Shaft diameter	ER 60	ER 80	ER 100	ER 120	ER 140	ER 160	ER 200
12	6201ZZC3						
15	6002ZZC3	6302ZZC3					
20	6804ZZC3	6004ZZC3					
25		6905ZZC3		6305ZZC3	6305ZZC3	6305ZZC3	
30		6806ZZC3	6006ZZC3	6206ZZC3	6206ZZC3	6206ZZC3	
35			6907ZZC3	6007ZZC3	6007ZZC3	6007ZZC3	6307ZZC3
40				6908ZZC3	6908ZZC3	6908ZZC3	6208ZZC3
50							6010ZZC3
55							6911ZZC3

### Self-aligning ball bearing

Shaft diameter	ER 60	ER 80	ER 100	ER 120	ER 140	ER 160	ER 200
12	1201/2201						
15		1302/2302					
20			FB bearing (P.15)				
25				1305/2305	1305/2305	1305/2305	
30				1206/2206	1206/2206	1206/2206	
35							1307/2307
40							1208/2208

### Materials

<b>Roller tube</b>	AlMgSi 0,5
<b>Bearing seat / Bases</b>	AlMgSi 0,5 / C45
<b>Shaft / Pin</b>	C45 / 1.4305
<b>Alternativ material</b>	custom made
<b>Coating</b>	custom made

### Alternative Surface WOB

- WOB** overturned to 0.05 mm/m
- WOB** crowned overturned after drawing
- WOB** overturned and spiralized after drawing

### Balancing

Dynamic balanced after DIN ISO 1940  
Quality Grade Q 2.5 / Q 6.3

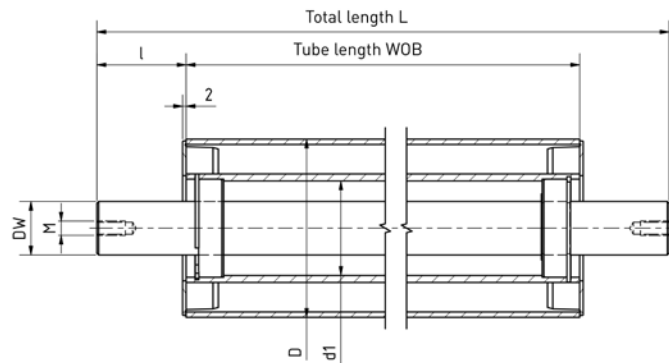
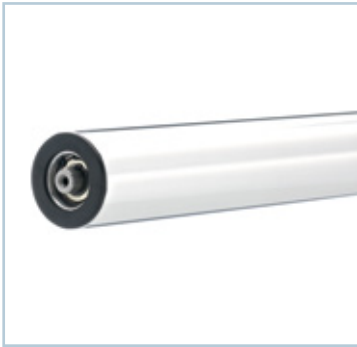


Self-aligning ball bearing



Deep groove ball bearing

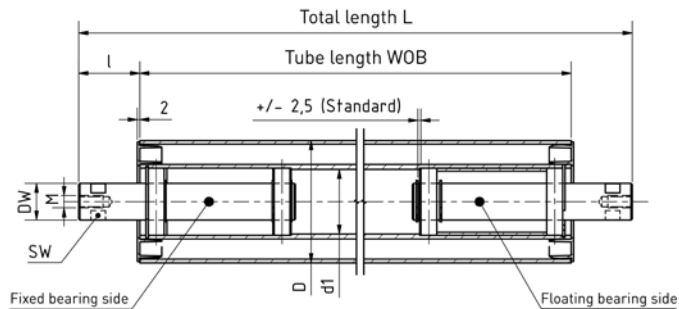
# DL-W



## EconomicRoll® with continuous axis / shaft

	ER 60	ER 80	ER 100	ER 120	ER 140	ER 160	ER 200
D (mm)	60	80	100	120	140	160	200
d1 (mm)	31	40	53	60	60	60	77
Bearing seat ø (mm)	32	42	55	62	62	62	80
DW (mm)	12/15/20	15/20/25/30	30/35	25/30/35/40	25/30/35/40	25/30/35/40	35/40/50/55
L, WOB, I, M	freely selectable						

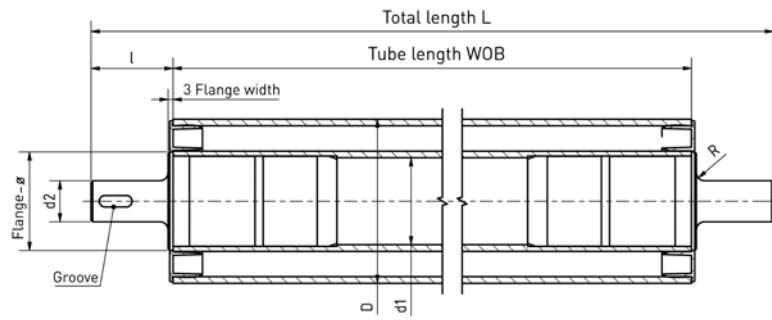
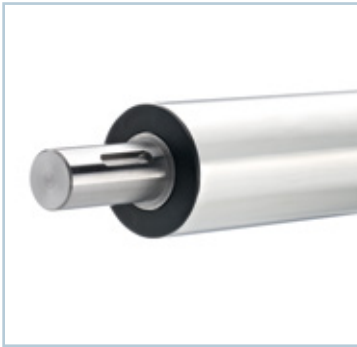
# Dancer roll



## EconomicRoll® with fixed and floating bearing bolts

	ER 60	ER 80	ER 100	ER 120	ER 140	ER 160	ER 200
D (mm)	60	80	100	120	140	160	200
d1 (mm)	31	40	53	60	60	60	77
Bearing seat ø (mm)	32	42	55	62	62	62	80
DW (mm)	12/15/20	15/20/25/30	30/35	25/30/35/40	25/30/35/40	25/30/35/40	35/40/50/55
L, WOB, I, M, SW	freely selectable						

# ST-Z



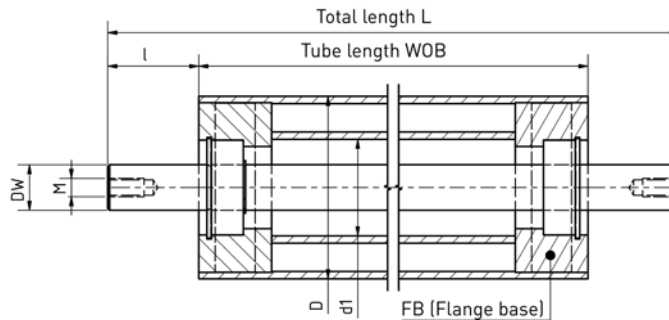
## EconomicRoll® with glued steel pins

	ER 60	ER 80	ER 100	ER 120	ER 140	ER 160	ER 200
D (mm)	60	80	100	120	140	160	200
d1 (mm)	31	40	53	60	60	60	77
Bearing seat ø (mm)	32	42	55	62	62	62	80

L, WOB, l, d2, NUT, M, SW

freely selectable

# FB-W



## EconomicRoll® with steel or aluminium glued bases and continuous axis / shaft

	ER 60	ER 80	ER 100	ER 120	ER 140	ER 160	ER 200
D (mm)	60	80	100	120	140	160	200
d1 (mm)	31	40	53	60	60	60	77
Bearing seat ø (mm)	32	42	55	62	62	62	80
DW (mm)	12/15/20	15/20/25/30	30/35	25/30/35/40	25/30/35/40	25/30/35/40	35/40/50/55
L, WOB, l, M	freely selectable						

Flange base material

Aluminium or steel design according to customer specifications

# DIMENSIONAL VARIETY: ALUMINIUM ROLL TUBES BY DRECKSHAGE.

- Variable:** Versatile bearing types
- Precise:** More precise than the DIN standard
- High-quality:** Various surface finishes

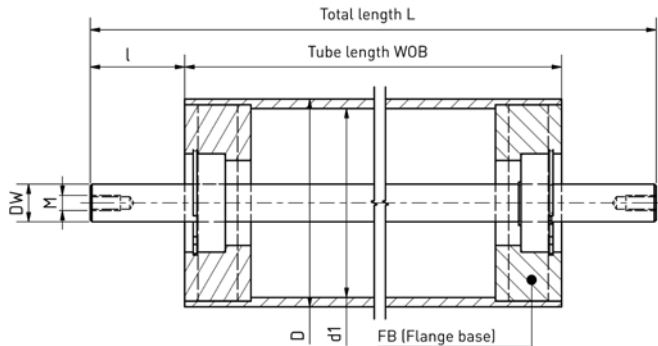




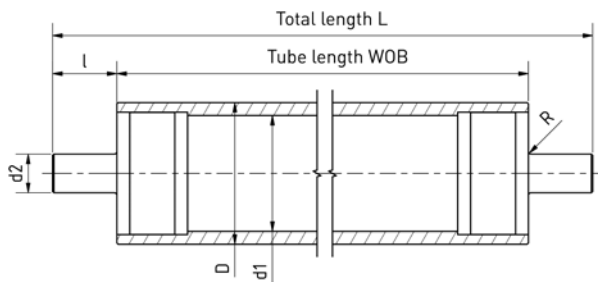
***With individual solutions from DRECKSHAGE***  
we manufacture ready-to-install aluminium rolls with a wide variety of dimensions, surfaces and bearing types.

# Bearing designs – aluminium rollers

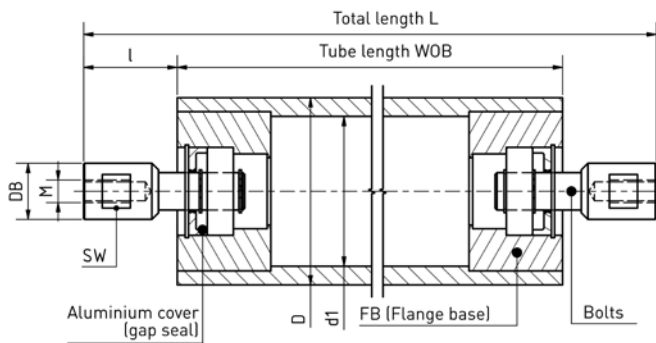
**WAA-FB-W** Aluminium precision roll tube with glued bases and continuous axis / shaft.



**WAA-ST-Z** Aluminium precision roll tube with glued steel pins.



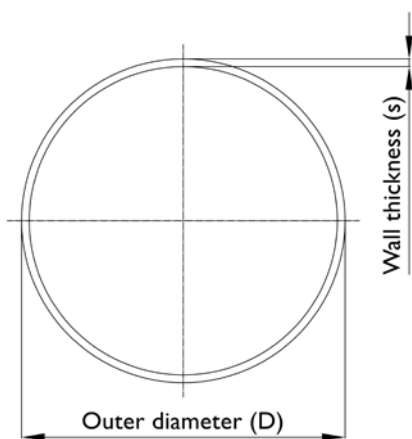
**WAA-DL-B** Aluminium precision roll tube with glued bases and bolts.



## Practical examples

Bearing type	D (mm)	WOB	L	l	DW (mm)	End machining	Ball bearings
WAA-FB-W	70 × 5	800	1000	100	20	M12	6804ZZC3
WAA-ST-Z	90 × 10	1750	2000	125	30	NUT	-
WAA-DL-B	130 × 10	3500	3800	150	35	M16 / SW32	1207

# Technical data – aluminium roll tubes



**Material:**  
 AlMgSi0,5  
 ENAW6060 F66  
 EN 755-8

**Tolerances:**  
 Outer diameter (D)  
 ISO k12  
 Internal diameter  
 ISO H11  
 Concentricity  
 •  $D \leq 200$  mm 0,4 mm/m  
 Precision straightening  
 • Concentricity accuracy  
 up to 0.2 mm/m

Outer diameter	Wall thickness	Outer diameter	Wall thickness
in mm	in mm	in mm	in mm
200	12.5	102	8.5
200	10.0	100	10.0
190	10.0	100	6.0
190	8.0	100	5.0
182	11.0	90	10.0
180	10.0	90	6.0
170	10.0	81	8.0
160	10.0	80	10.0
160	8.0	80	5.0
152	11.0	80	3.0
152	6.0	75	7.0
150	15.0	70	10.0
150	10.0	70	8.0
150	7.5	70	5.0
144	11.0	62	6.0
140	10.0	60	10.0
130	15.0	60	5.0
130	10.0	60	3.0
125	10.0	60	2.0
122	7.0	50	8.0
120	15.0	50	5.0
120	10.0	50	3.0
120	8.0	42	7.0
120	7.0	40	6.0
120	5.0	40	3.0
114	10.0	35	6.0
114	8.0	30	4.0
110	10.0	27	3.0

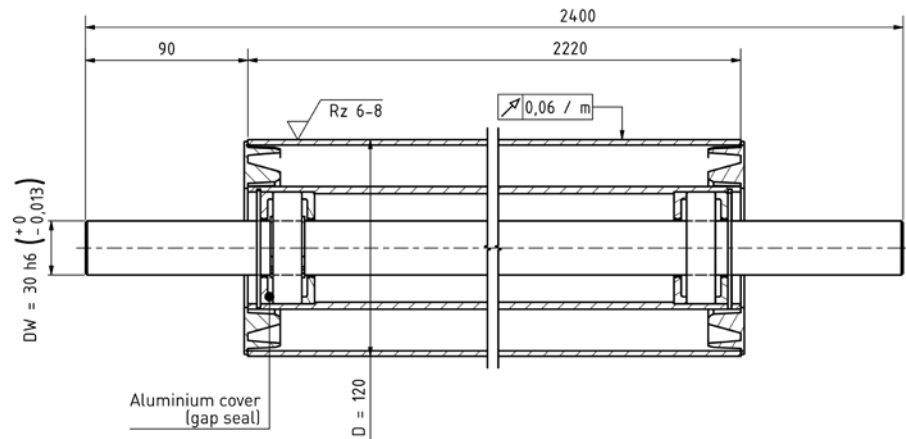
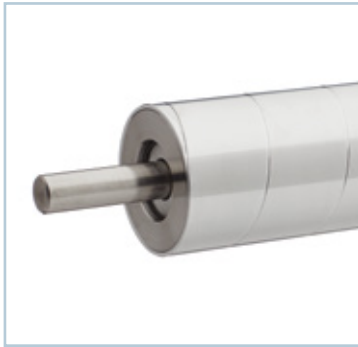


# DEFINED LOW-FRICTION ROLLERS

Upon request, we manufacture rolls for you with a defined start-up weight. We achieve this through precision balancing, a special bearing, as well as low-viscosity lubrication.



# Defined low-friction rollers

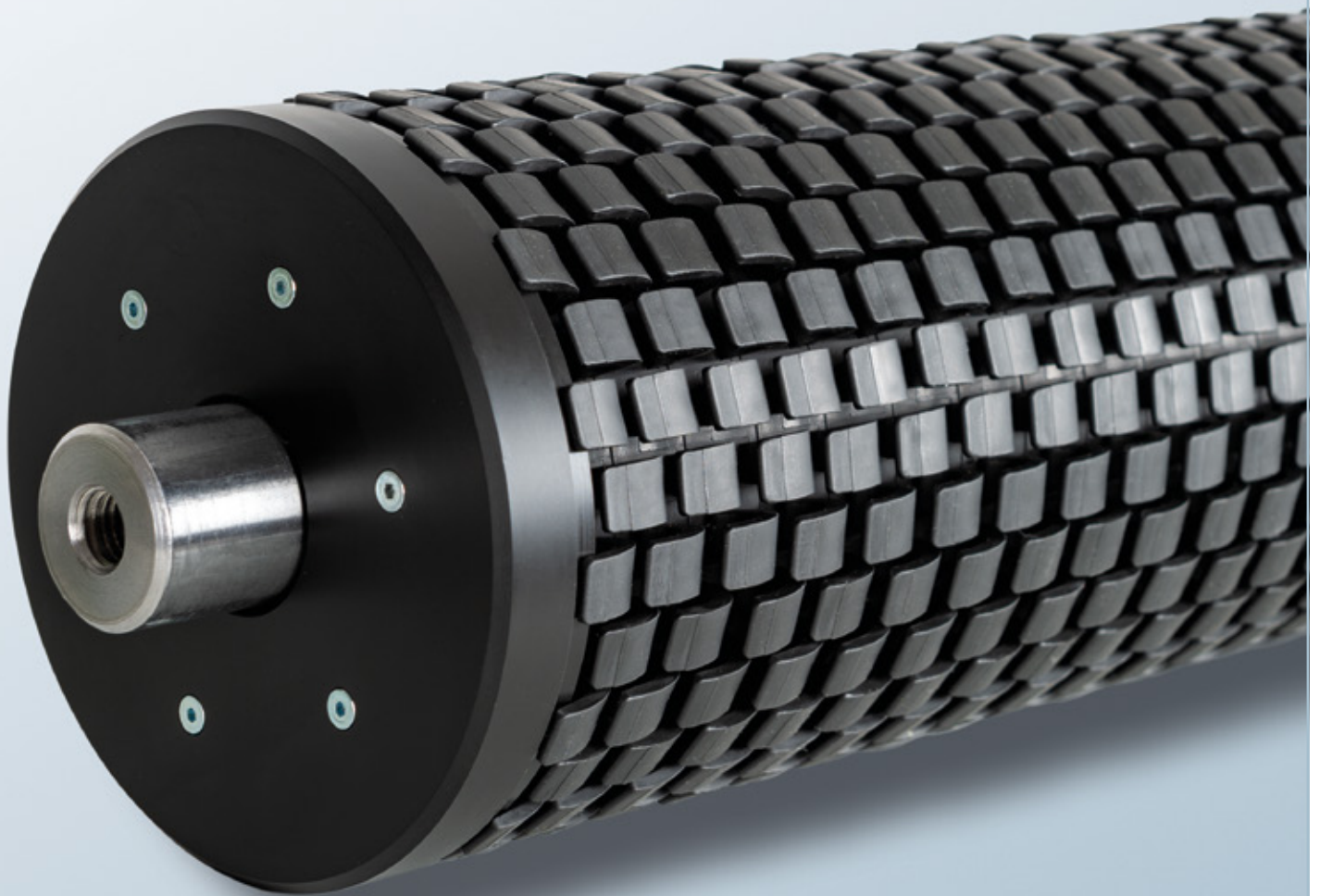


Basic EconomicRoll® with a start-up weight of 20 grams

August Dreckshage GmbH & Co. KG Walter-Werning-Straße 7 33699 Bielefeld			
<b>Balancing protocol</b>			
<b>Type</b>			
Rotor type	ER120-2220-2400-DL		
Rotational speed (target)	500 1/min (Rotating direction: normal)		
<b>ABC geometry</b>			
Position of compensation level			
Distance a	75,0 mm		
Distance b	2100,0 mm		
Distance c	75,0 mm		
Radius 1	54,0 mm		
Radius 2	54,0 mm		
<b>ISO 1940-1:2003 (Calculation)</b>			
Type of calculation regarding	quality level G		
Deviation	-10		
Quality level	G 2,5		
Mass of rotor	16,0 kg		
Operating rotation speed	500 1/min		
Distance of bearings L	2250,0 mm		
Distance bearing A – Center of gravity	1125,0 mm		
Distance bearing B – Center of gravity	1125,0 mm		
<b>Test results, Run 1:</b>			
RotorIdent	ER120-2220-2400-DL1		
Test rotation speed	502 1/min		
<b>Unbalanced mass</b>			
Compensation level 1	916 g·mm	227 °	2,7 * Tol
Compensation level 2	907 g·mm	295 °	2,6 * Tol
<b>Compensation</b>			
Compensation level 1 – mass (fix)	17,0 g	47 °	2,7 * Tol
Compensation level 2 – mass (fix)	16,8 g	115 °	2,6 * Tol
<b>Test results, Run 2:</b>			
RotorIdent	ER120-2220-2400-DL1		
Test rotation speed	502 1/min		
<b>Unbalanced mass</b>			
Compensation level 1	48,8 g·mm	280 °	in Tol
Compensation level 2	77,8 g·mm	313 °	in Tol
<b>Compensation</b>			
Compensation level 1 – mass (fix)	903 mg	100 °	in Tol
Compensation level 2 – mass (fix)	1,44 g	133 °	in Tol
Date	Signature	Stamp	

# THE **ECOSTRETCH**ROLL - A HIGH-EFFICIENCY SPREADER ROLLER FOR SUCH MEDIA AS FILM, NONWOVEN, TEXTILE OR PAPER

- Even spreads media with layer thickness <5 µm
- Gentle, non-marking and effective spreading
- Low wear
- Ozone resistant
- Can be used for multiple cuttings
- Vibration reducing
- No external drive required; the spreader roller is driven by the web
- Available with FDA approval
- no functionless centre area



***Quantum leap in web spreading:***

The highly efficient EcoStretchRoll spreader roller manufactured by DRECKSHAGE.

# EcoStretchRoll-ST:

The Allrounder for layer thickness  $>5 \mu\text{m}$ .







## EcoStretchRoll-BR:

The Basic ring for easiest applications.

# Advantages EcoStretchRoll



## Web speed:

The EcoStretchRoll can be used up to 800 m/min. At the same time, it has a vibrationdamping effect and runs absolutely quietly.



## Roll body:

Lightweight aluminum roll tubes with special geometry for high bending stiffness. Fast response due to low start-up weights and low inertia.



## Contact surface:

Slightly curved, large contact surfaces ensure mark-free guidance without relative movement.



## Web thickness:

Spreads any material thickness  $>4 \mu\text{m}$  and  $>8 \text{g/m}^2$ .



## Multiple cutting:

Applicable for multiple cuttings.



## Web Tension:

Between 25 and 750 N/mtr. roll length.



## Assembly:

Each EcoStretchRoll is produced according to customer specifications and delivered ready for installation. It is ready for immediate use without external drive or adjustment.



## Principle of operation:

1,400-2,800 independently operating individual spreader elements per meter of roll length.



## Wrap angle:

Full functionality at  $8\text{-}180^\circ$  wrap angle.



## Material properties:

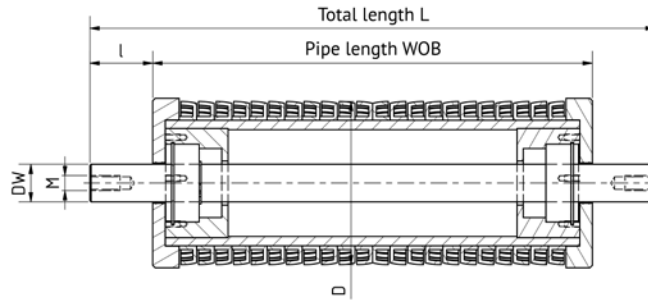
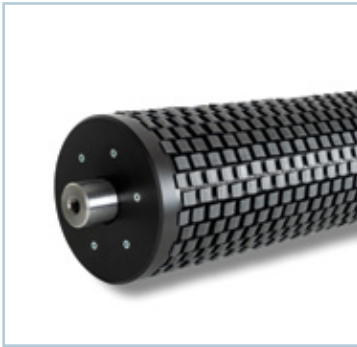
Wear-resistant, temperature- and ozone-resistant, good antistatic behavior and FDA-approval on request.



## Variants:

The EcoStretchRoll is available in four diameters (60, 110, 130, 150 mm) and can be produced to customer specifications up to a maximum of 7,000 mm.

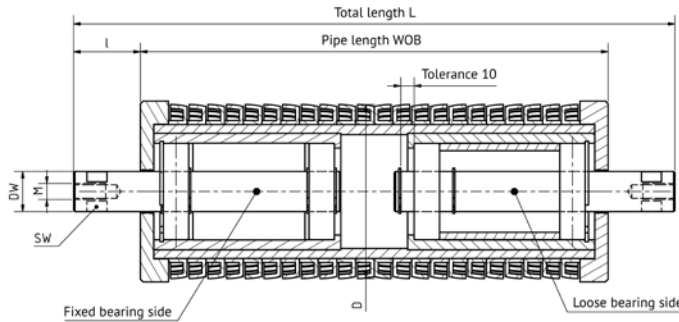
# ESR FB-W



## EcoStretchRoll with continuous axis / shaft

	ESR 60	ESR 110	ESR 130	ESR 150
D (mm)	60	110	130	150
DW (mm)	15	30	30	35
L, WOB, I, M	freely selectable			

# ESR FB-T

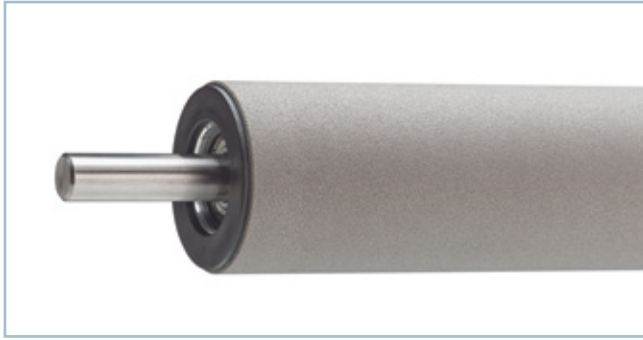


## EcoStretchRoll with fixed and floating bearing bolts

	ESR 60	ESR 110	ESR 130	ESR 150
D (mm)	60	110	130	150
DW (mm)	15	30	30	35
L, WOB, I, M	freely selectable			

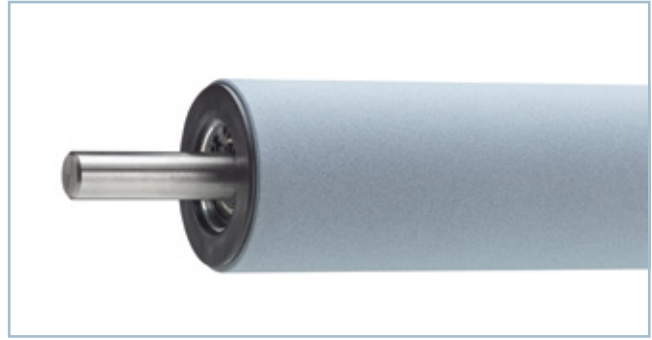
# Coatings – Technical rollers





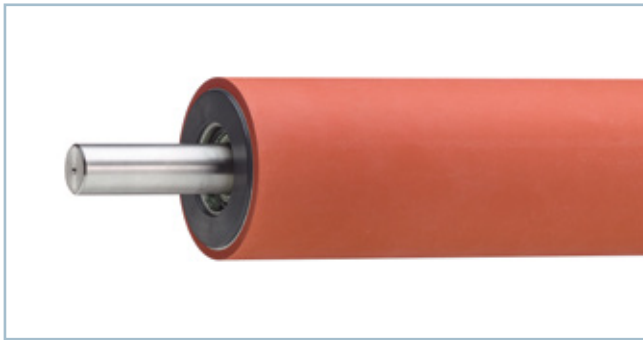
### **Non-stick coatings**

- Excellent non-stick properties
- High wear protection, easy cleaning
- On request with FDA approval
- Various surface qualities
- Good grip qualities



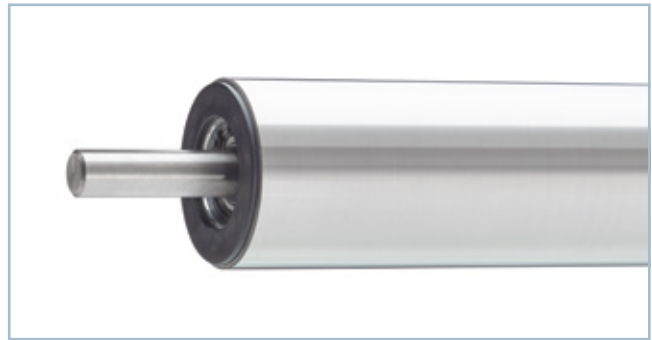
### **Ceramic coatings**

- Hardness = 40-65 HRC
- Electrical insulation
- High layer thickness of up to 2 mm / Rz 2-50 µm
- High temperature resistance
- Wear-resistant, cut-resistant and grindable



### **Rubber coatings**

- Design according to customer specifications (various Shore hardnesses, colours, finishes) with grip, non-stick, wear protection, electrical conductivity and anti-static
- e.g. NBR, EPDM, PU, silicone NR, XNBR, SBR, CR



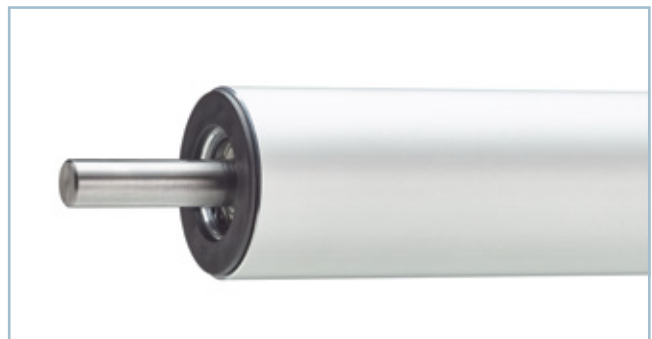
### **Hard metal coatings**

- Very hard layer (55-72 HRC)
- Cut-resistant
- Higher durability compared to hard chrome (3-5x service life)
- Low porosity <1%; Rz 1-25 µm / grindable
- Resistant to erosion, abrasion and oxidation



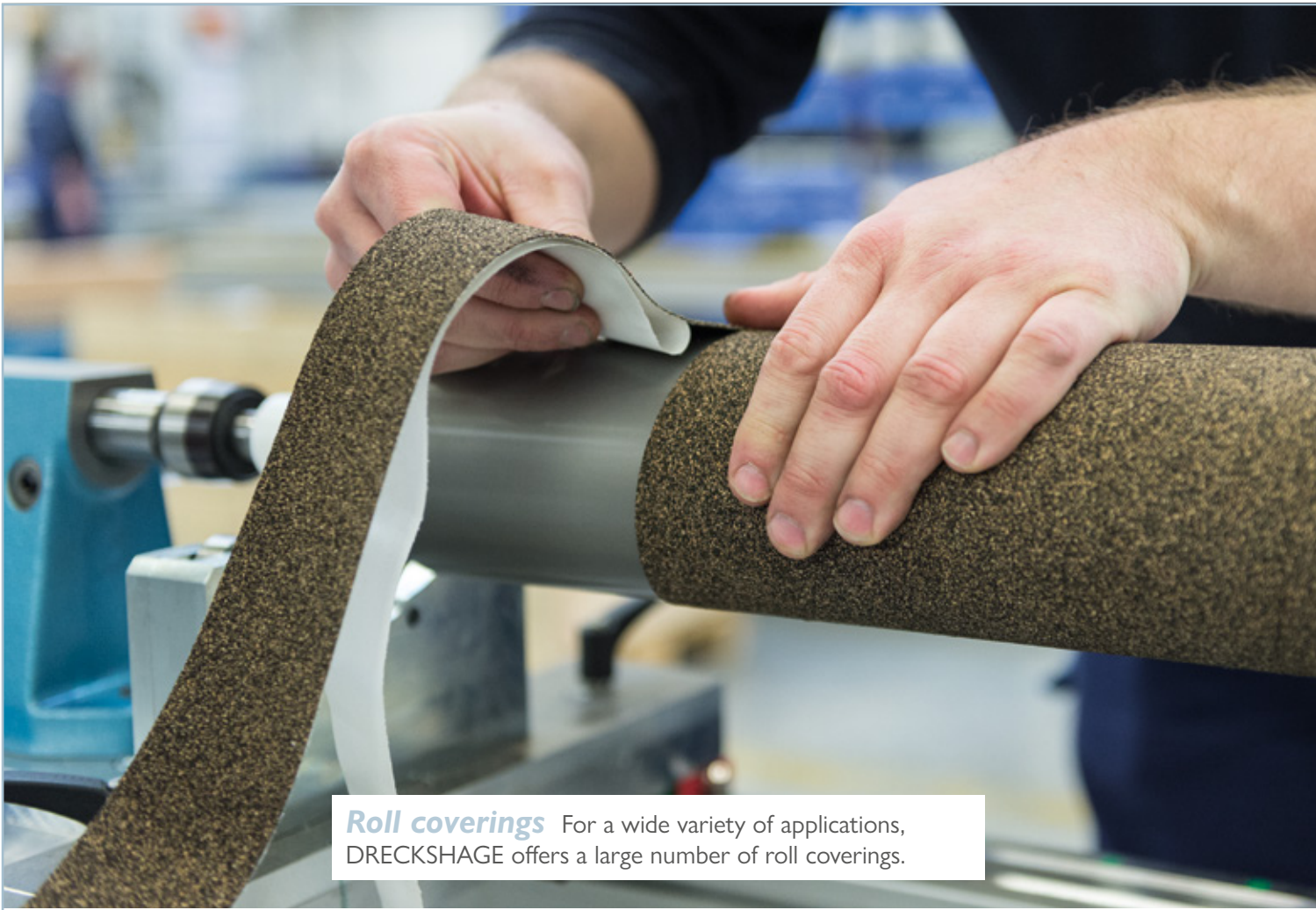
### **Hard anodisation**

- Increased protection against corrosion and wear
- Layer thickness 50+/-10 µm

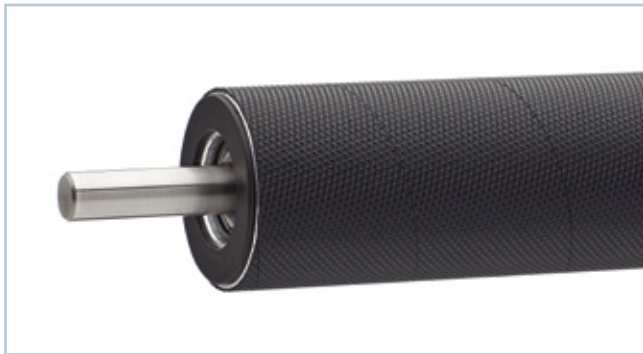
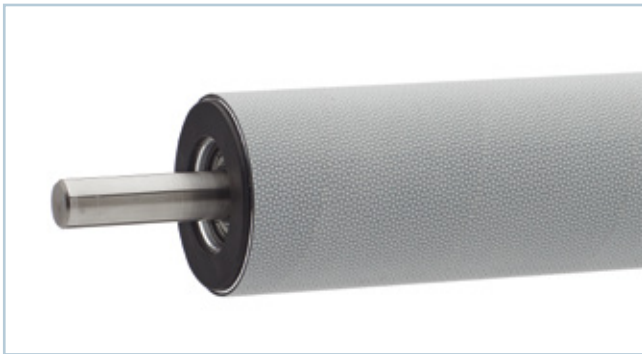


### **Anodisation E6/EV1**

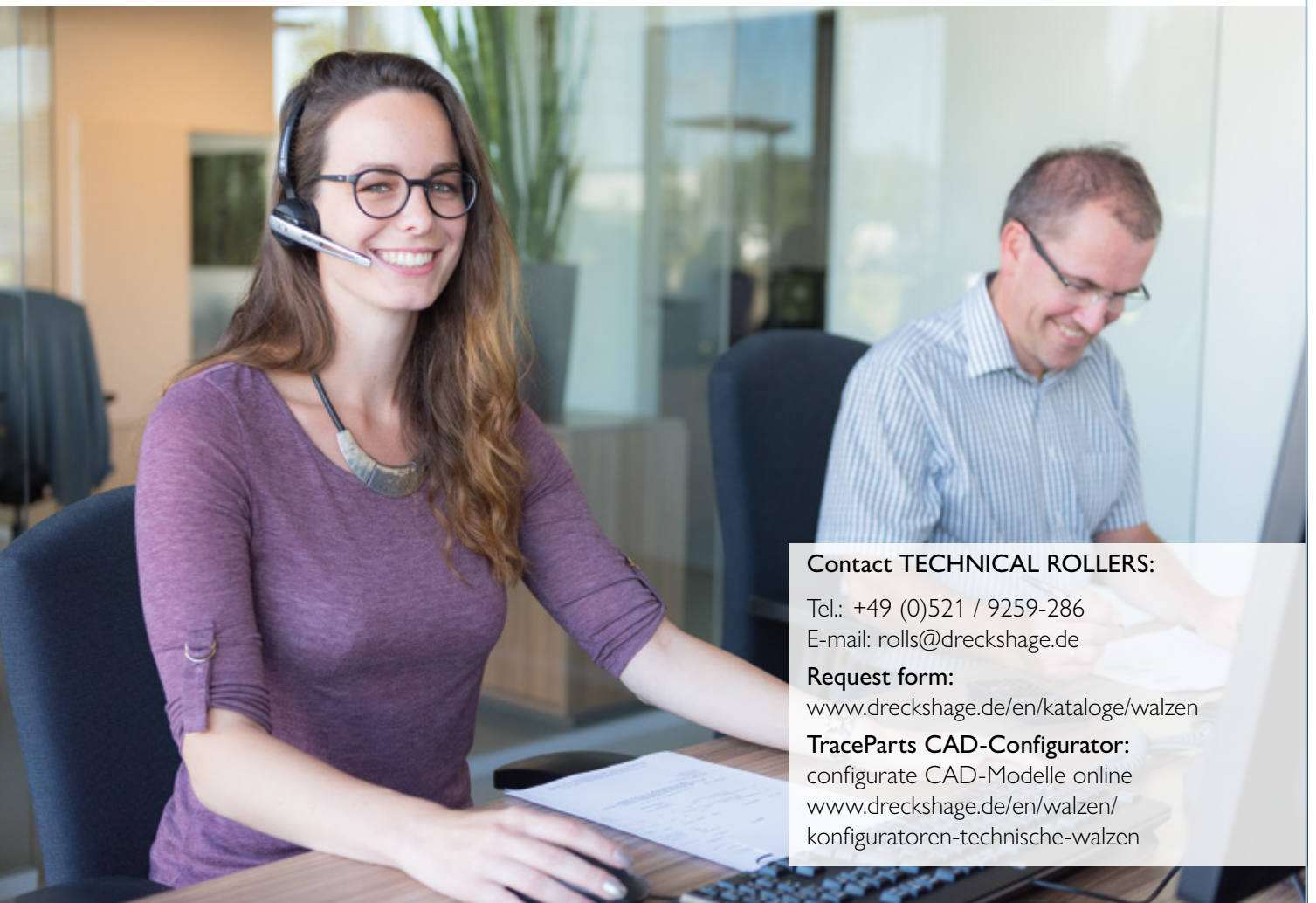
- Medium protection against corrosion and wear



**Roll coverings** For a wide variety of applications, DRECKSHAGE offers a large number of roll coverings.



WE LOOK FORWARD TO  
INSPIRING YOU.



**Contact TECHNICAL ROLLERS:**

Tel.: +49 (0)521 / 9259-286

E-mail: [rolls@dreckshage.de](mailto:rolls@dreckshage.de)

**Request form:**

[www.dreckshage.de/en/kataloge/walzen](http://www.dreckshage.de/en/kataloge/walzen)

**TraceParts CAD-Configurator:**

configure CAD-Modelle online

[www.dreckshage.de/en/walzen/  
konfiguratoren-technische-walzen](http://www.dreckshage.de/en/walzen/konfiguratoren-technische-walzen)



Materials



Linear Technology



Technical Rollers



Profiles + Systems