



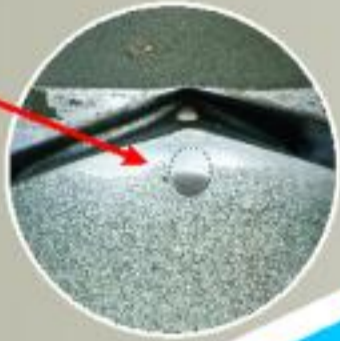
Reconditioning Services

We at NPK would like to preserve your original machine parts. This is the main reason for offering our comprehensive reconditioning services for your automatic winding drums.

Our Process will remove all usual defects such as rusting, peeling of coating, scratches from drum cover, dent marks on crossover and knife edge scratches.

We have infrastructure to deplate the original component, re-machine effected area via our CNC Multi Axis machine, re-grind the total component, polish on our automated high speed buffing machine and replat the component and then dynamically balance the drum.

Our services will preserve and salvage your original equipment, remove wear and tear issues and extend the usable life for another 5-7 years.



- Takeup Rolls
- Cam
- Intricate Castings



DRUMS

Bakelite
Aluminum Hard Anodized
Full Steel & SynTraverse

Agent Stamp



NPK Textile Engineers
Full Steel & SynTraverse
Hard Anodized Aluminum Drums &
Special Purpose CNC Machined Drums

N. P. Kinariwala Pvt. Ltd.
Bakelite Drums, Bakelite Takeup Rolls, Intricate Castings &
Scissors in HSS, Carbide & Ceramic

NPK Exports Pvt. Ltd.
Export Unit



148, Muktimedan, Maninagar
Ahmedabad 380 008 India
Phone : +91 79 25467920, 25460581
Fax : +91 79 25468728
E-mail : npkindia@gmail.com
sales@npkindia.com
Web : www.npkindia.com

*If it's 'NPK'..
It's Better Engineered*



OD Range : 76mm – 100mm
 Traverse Range : 3", 4", 5", 6" and 8"

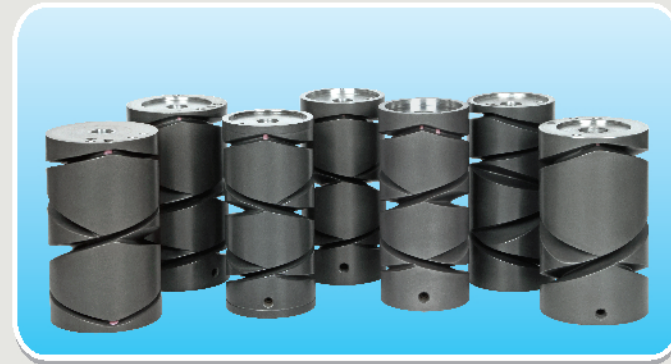
Bakelite Drums

This drum is made from a special grade **thermoset polymer** which has **excellent wear resistance** and machining properties. After machining each drum is **super polished, dynamically balanced and fitment dimensions inspected**. At additional cost ceramic inserts, side flanges and aluminum bushings can be provided to extend life. We recommend these drums for **winding 100% cotton yarns – coarse to fine counts**.

Aluminum Hard Anodized

This drum is made from a **special aluminum alloy** which has high content of base metal mixed with select noble alloys. The result is a **light weight drum** which is machined, polished, hard anodized and dynamically balanced for **superior wear resistance** while high speed winding of 100% cotton or cotton / synthetic blend yarns.

Our **anodizing** treatment is a select electrolytic passivation process which **increases the wear resistance** on surface and grooves of the entire aluminum drum uniformly. At additional cost ceramic inserts, side flanges and aluminum bushings can be provided to extend life.



OD Range : 82mm – 165mm
 Traverse Range : 3", 4", 6", 8", 10" and 12"

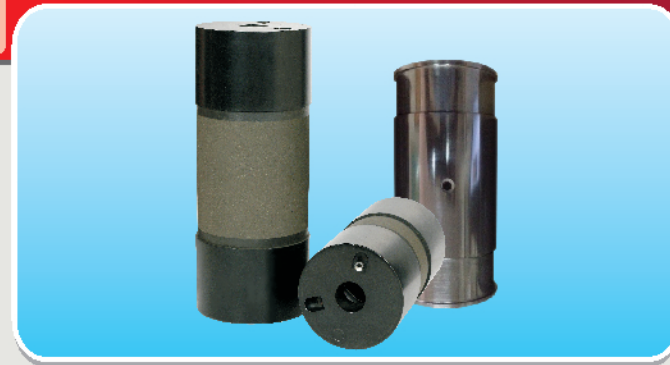
Full Steel & SynTraverse Drums

We produce two types of steel drums. The first is our A/T range of full steel **hollow cast drums** available with plasma hardcoat or electroless nickel. Each component is machined using **CNC / NC SPM's**, ground and surface coated in range of **60-62HRC**. These drums are best suitable for abrasive yarns such as dyed or **mercerized cotton, dyed synthetic** or wool, linen and yarns for industrial or **technical textiles**.

The second is our SynTraverse range which is a unique blend of **multiple technologies**. The **core** inside these drums is made of a special grade of thermoset polymer which is covered with a **mild steel sheet**. On the sheet the edges are so projected over the core that while winding only the mild steel **hard chrome plated edges** come in contact with yarns. Each component is specifically seam and spot welded, ground & hard chrome plated for surface hardness of **63HRC**.



OD Range : 76mm – 100mm
 Traverse Range : 3", 4", 5", 6" and 8"



OD Range : 80mm - 100mm
 Length Range : 90mm - 280mm

Takeup Rolls

for TFO, OE Spinning and Air Jet Spinning

This roll is made from a special grade **thermoset polymer** using a **monoblock** method to produce **light weight components** which are **rigid and robust** in design and performance. Each component has single or double grooves for fitment of apron and internal bore with tapping point.

Also available are parts with three piece construction with central bakelite cylinder and two flanges either with taper lock nut or grub screw fitment.

Cam

for traversing & motion control applications

We custom **manufacture** cams from **traverse length 25mm to 500mm** as per customer specifications using materials such as engineering plastics (**ABS, Delrin etc**), **cast iron / SGI (grades)** and **EN series materials**. Our cylindrical cams are used for traversing and motion control applications in textile machines and engineering industries.



Length Range : 25mm - 500mm

Intricate Castings

for textile machines

We specialized in **design, development and production** of ferrous (CGI, SGI and GG materials) and non ferrous castings (aluminum alloys **with or without internal core**).

These parts require **specific function, structural integrity, strict weight tolerance** and accurate design are produced using gravity / pressure die casting techniques or resin shell molding process.

Our castings are known for their complex **shapes, light weight structures, Pre balanced design, zero defect process and good machining properties**. Tools are designed using CAD and process improvements validated using modern mould flow simulations.

